

*CURE MAX*TM

UV Flood Lamp Curing System

- Intense, Uniform Curing
- High Intensity, Long Life Bulb
- Bi-Level PCM
(Power Control Module)
- Easy Removable Lamp Module
- 8" x 8" Uniform Cure Area
- Adjustable Shelf
- Stainless Steel Construction
- Class 100 Cleanroom Ready
- Specific Process UV Filters
(available optionally)



**UNIFORM EXPOSURE CURING
IS FINALLY HERE!**

ONLY FROM

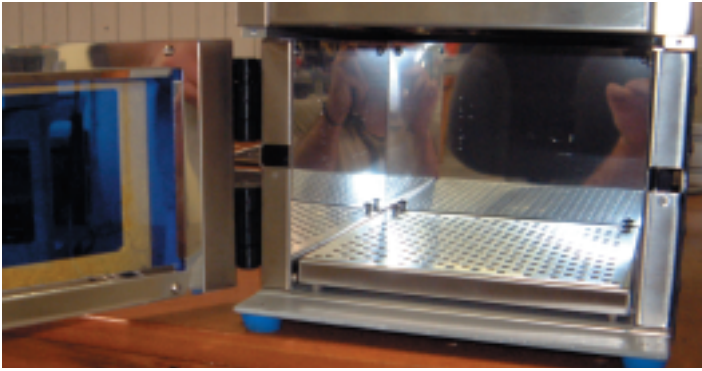
LESCOTM

LIGHTWAVE ENERGY SYSTEMS CO., INC

www.lescouv.com
23555 Telo Ave. • Torrance, CA 90505

Phone: 310-784-2930 • Fax: 310-784-2929 • TOLL FREE: 1-800-61-LESCO

Exposure Lamp System



Specifications:

- The Irradiator with Cure Chamber: 14" D x 9.5" W x 18.5" H. 30 Lbs.
- Cure Chamber size: 8" x 8" x 6" (without shelf) 8" x 8" x 5.2" (with shelf)
- Removable Lamp Module - recommended service is every 1000 hours of lamp use, field repairable or return to factory for replacement
- Standard Bulb: High Intensity with high UVC & UVA output
- Bi-level Power Control Module (PCM) 15.5" D x 9.875" W x 6" H. 36 Lbs.
- Auto ranging input voltage for worldwide operation (Please specify values at time of purchase)
- Class 100 Cleanroom ready
- 6' long interconnecting cable (PCM to irradiator)

Options:

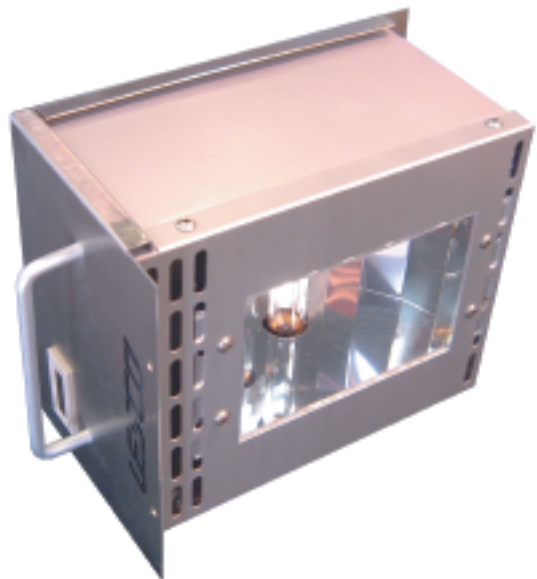
- Solid State Multi-level Power Control Module (PCM)
- Spectrum Specific Process UV Filters
- Exposure Chamber Door with viewing window
- Exposure Chamber Design with extra cooling for use with temperature sensitive parts
- Nitrogen purge chamber
- Custom large parts chamber for taller parts
- I/O connection
- Bulbs with higher specific spectral output
- Special purpose reflectors

STAINLESS STEEL IRRADIATOR WITH CURE CHAMBER

- Removable Lamp Module with Bulb Reflector assembly and Lamp Hour Meter
- Specially designed reflector system for uniform UV exposure
- Precision motor drive shutter mechanism
- Safety interlock on the Exposure Chamber door to close the shutter automatically
- Adjustable part shelf
- High output Bulb

STATE OF THE ART POWER CONTROL MODULE (PCM)

- Automatic timer control for shutter open duration
- System Use Accumulating Hour Meter
- Shutter Actuating Footswitch
- "Time/manual" Selectable Operating Mode



EASY REMOVABLE LAMP MODULE FOR INSTANT RELAMPING

ONLY FROM
LESCO™
LIGHTWAVE ENERGY SYSTEMS CO., INC

www.lescouv.com
23555 Telo Ave. • Torrance, CA 90505

Phone: 310-784-2930 • Fax: 310-784-2929 • TOLL FREE: 1-800-61-LESCO